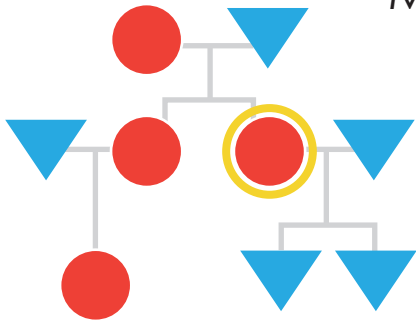


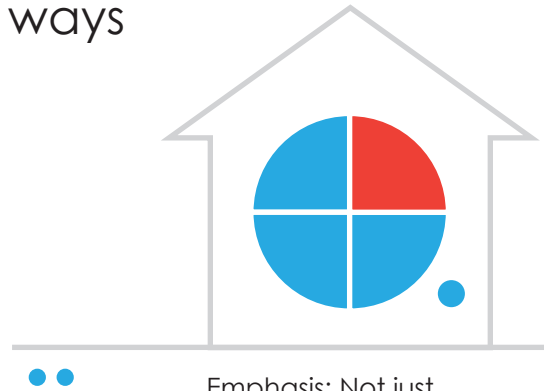
Story of Me: Visual Toolbox

My family: 2 ways



Emphasis: How we are all related

- Color (to distinguish between 2 populations)
- Shape (to distinguish between 2 populations)
- Color (for Highlight)
- Lines (Connecting relationships)
- Familiar form (family tree)



Emphasis: Not just people (animals!)

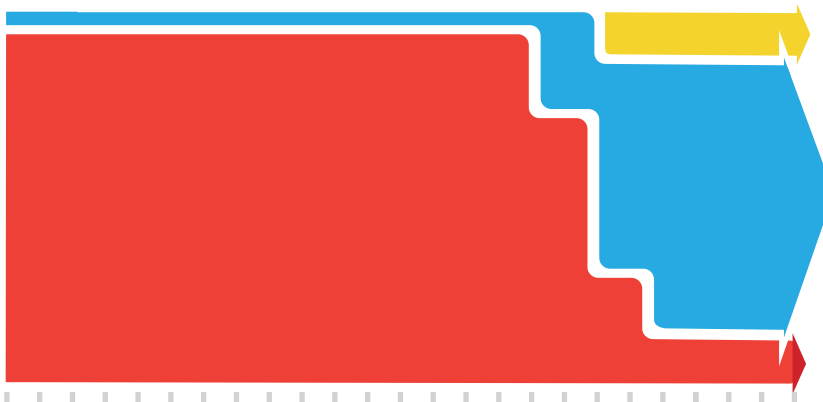
- Color
- Shape
- Size
- Position

My career: 3 ways



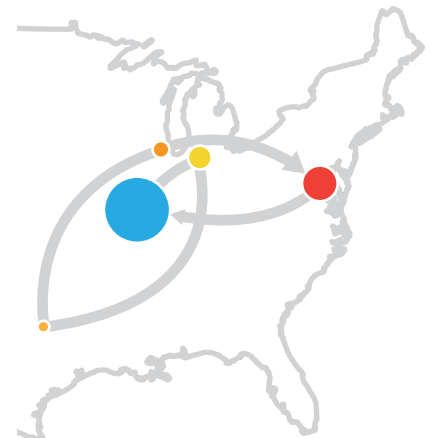
Emphasis: Length of time at employer, intensity of the job

- Color
- Iconography
- Time (ticks)
- Familiar form (timeline)



Emphasis: Complexity of types of work being done

- Color
- Size: relationships change over time
- Time (ticks)
- Familiar visual form (timeline)



Emphasis: Length of time at each location

- Color
- Position
- Line (connect sequence)
- Time (procession)
- Familiar form (map)